

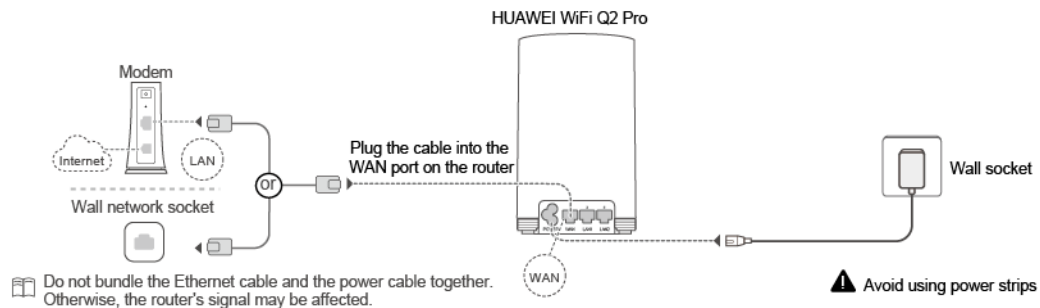
Installation Guide

How do I configure my HUAWEI WiFi Q2 Pro for the first time?

Once you have configured the first router from the pack, you can simply connect the power supplies of the other two and wait for their indicators to turn steady blue to gain Internet access.

1. Connect the Ethernet cable.

Take out one of the routers from the pack (any one of the three routers can be configured as the main router) and connect the power supply and Ethernet cable.



- **Install the HUAWEI SmartHome app.**

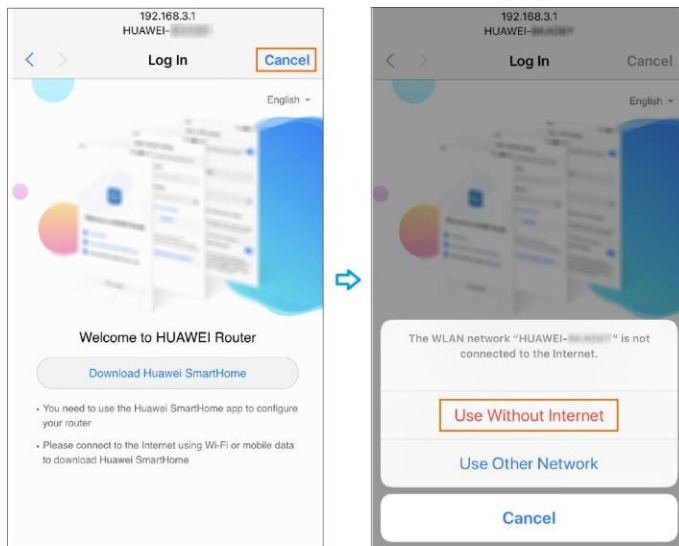
Scan the QR code at the bottom of your router to download and install the HUAWEI SmartHome app (the app used to configure your routers).

- You can also download and install the app from your app store by searching "HUAWEI SmartHome". For Android users, go to your Google Play Store; for iOS users, go to your App Store.
- If you have a pre-installed HUAWEI SmartHome app on your phone, ensure that it is up-to-date.

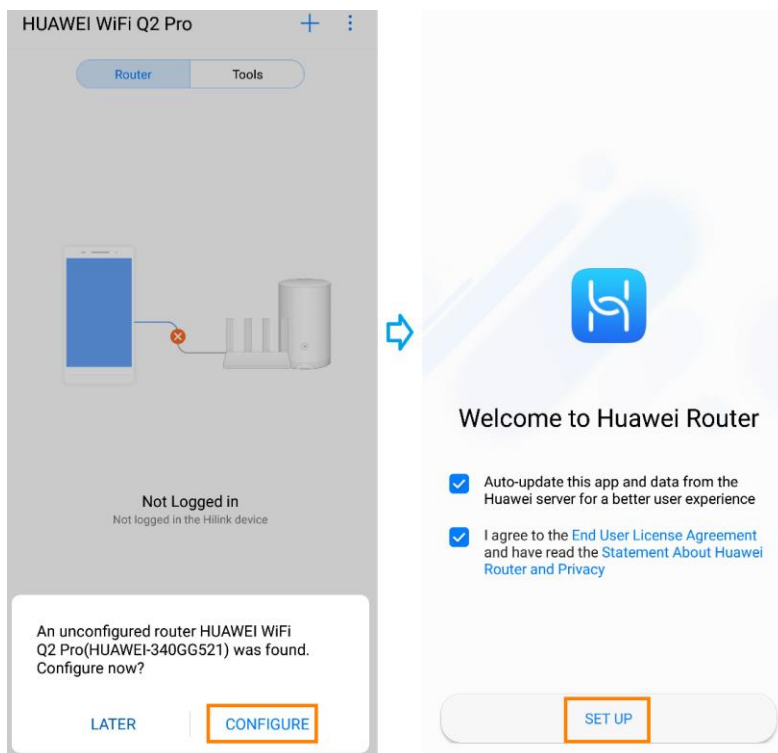
- **Configure your routers through the app.**

- a. Connect your phone to your router's Wi-Fi (no password is required). Your router's Wi-Fi name can be found at the bottom of the connected router.
 - Some iOS users may receive a pop-up notification. In this case, touch **Cancel** in the upper right corner of the pop-up screen, then touch **Use Without Internet** to return to the home screen (or touch **Finish** on the pop-up screen).

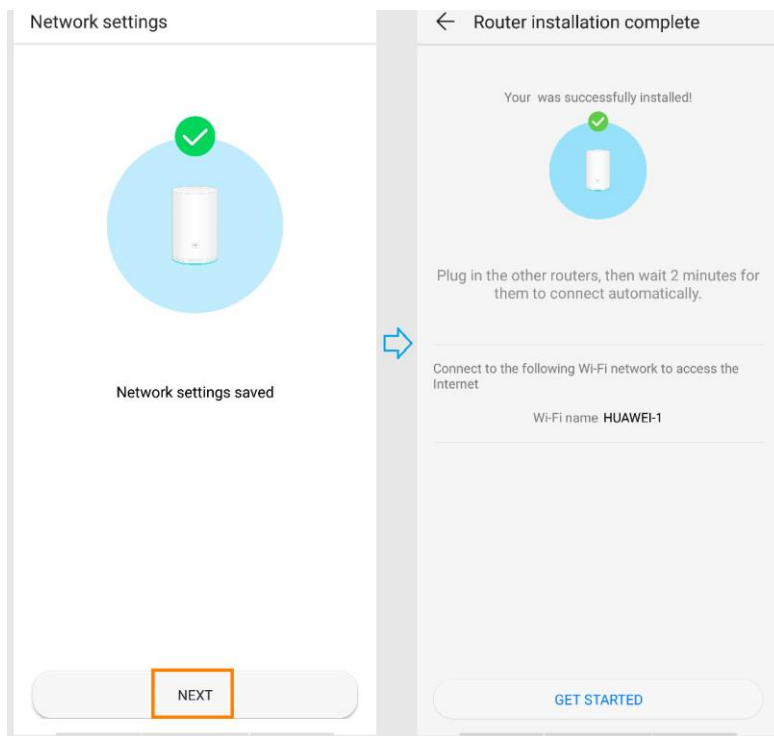
- If the options menu does not appear when you touch **Cancel** to return to the home screen, try connecting to your router's Wi-Fi again and repeat the above-mentioned procedures.



Open the HUAWEI SmartHome app and go to **CONFIGURE > SET UP**.



- If a notification prompt does not appear, touch the **Add** button in the upper right corner of the app's home screen.
- Follow the Internet access wizard and enter the broadband account and password provided by your service provider into the **Broadband account** and **Broadband password** fields, then touch **CONNECT**.
 - If you have forgotten your broadband account and password, you can acquire them from your old router (connect an Ethernet cable from the WAN port of your old router to LAN port on your HUAWEI WiFi Q2 Pro connected to the Internet, then touch **RETRIEVE** and follow the onscreen instructions to acquire your account and password). You can also acquire the information by contacting your service provider.
 - Skip this step if your service provider adopts a DHCP (Dynamic Host Configuration Protocol).
- Continue to follow the Internet access wizard and set a new Wi-Fi name and password to complete the configuration process for your main router.



- **Connect the power supplies of the other two routers.**

Place the two secondary routers accordingly and connect their power supplies. Wait approximately two minutes until the indicators on both routers turn steady blue, and then reconnect the Wi-Fi on your phone to access the Internet.

- If the power supplies of both secondary routers are not connected simultaneously, the wait time may take longer than 2 minutes.
- The Wi-Fi name and password of all three routers are the same. As you move about in your home, your phone will automatically connect to the router with the strongest signal.